

FS-C8650DN

COLOUR PRINTER FOR A3 FORMATS

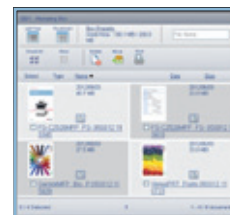
► print ► copy ► scan ► fax

TOP A3 COLOUR PRINTER WITH SUPERIOR PERFORMANCE

This high end, high speed, high performance printer comes with a vast array of versatile features and options. It is able to print up to 50 ppm A4 colour in the highest quality and thanks to KYOCERA's long life technology this machine will run and run. It also has our unique cartridge-free system that keeps costs and waste to a minimum, which is good for you and the environment.

- Up to 50/55 pages per minute A4 in colour and b/w
- Standard duplex unit for double-sided printing up to 50/55 ppm
- Up to 9,600 dpi printing quality with multi-bit technology
- High performance controller with 160 GB HDD as standard
- Unmatched input paper capacity of 1,150 – 7,650 sheets
- Superior finishing capabilities with up to 4,000 sheets capacity
- Optional Mailbox for easier selection of documents
- Long-life drum and developer lasts for 600,000 pages A4
- Exceptionally low printing costs in its class

4,000 sheet finisher staples up to 65 sheet documents and offers optional punching, booklet stitching and tri-folding.



Custom boxes provide easy and powerful Document Management as standard.



FS-C8650DN

COLOUR PRINTER FOR A3 FORMATS



ECOSYS stands for ECOlogy,
ECONomy and SYStem-printing.

With their long-life components, ECOSYS devices are designed to maximise durability and minimise the total cost of ownership with regard to maintenance, administration and consumables. The cartridge-free system means that only the toner has to be replaced regularly. The modular design concept allows you to add workflow-enhancing functions as required. Integrated system software provides long-term crossnetwork compatibility. KYOCERA's long-life components cost you and the environment less.

PRESCRIBE IIc

With the Kyocera page design and control language PRESCRIBE IIc, even complex graphics, logos and forms (multipart forms) can be created independently on the system and saved and updated in the printer. Consequently, integration into print files no longer applies. They are only accessed as required and therefore relieve the load on the network.

KYOCERA NetViewer

KYOCERA NetViewer enables complete monitoring and control of all ECOSYS printers and digital KYOCERA multifunction units from any Windows® PC and thus provides ideal network administration. It also supports the standardised SNMP protocol.

Command Center RX

The Command Center RX enables to control and manage various settings by accessing the device via Web browser. E.g. automatically updating of screens, customizing user screens, viewing department & restriction settings.

USB Host Interface for USB Flash Memory

Documents can be printed directly from a USB Flash Memory (e.g. USB stick) via the USB host interface. The documents stored as PDF, XPS, TIFF or JPEG are selected directly via the printer's control panel. No computer is required.

General

Technology: KYOCERA ECOSYS Colour Printer

Engine speed

Up to 50/25 pages per minute A4/A3 in colour
Up to 55/27 pages per minute A4/A3 in b/w

Resolution

600 x 600 dpi Multi-bit technology for print quality of up to 9,600 x 600 dpi

Duty cycle: Max. 225,000 pages per month (A4)

Warm-up time: Approx. 30 seconds or less from power on

Time to first page

Approx. 4.9 seconds or less in b/w
Approx. 6.2 seconds or less in colour

Dimensions (W x D x H): 672 mm x 787 mm x 744 mm

Weight: Approx. 111kg (basic unit ready for operation)

Power source: 220/240 V, 50/60 Hz

Power consumption

Printing: 1,160 W in b/w, 1,210 W in colour
Stand-by: 170 W
Power-Saving: 15 W

Noise: (Sound pressure level: ISO 7779 / ISO 9296)

Printing: b/w 53.2 dB(A) LpA, colour 53.0 dB(A) LpA
Stand-by: 37.0 dB(A) LpA

Safety standards

GS, TÜV, CE
This unit is manufactured according to ISO 9001 quality standard and ISO 14001 environmental standard.

Paper Handling

All paper capacities quoted are based on paper thickness of max. 0.11 mm. Please use paper recommended by KYOCERA under normal environmental conditions.

Input capacity

150-sheet multi-purpose tray, 60–300 g/m² (banner 136–163 g/m²),
A6R–304.8 x 457.2 mm, banner max. 304.8 x 1,219.2 mm;
2 x 500-sheet universal paper cassette, 60–256 g/m²,
A5R–304.8 x 457.2 mm
Max. input capacity with options: 7,650 sheets A4

Duplex unit: Double-sided printing: A5R – 304.8 x 457.2 mm, 60–256 g/m²

Output capacity

500 sheets face-down main tray, 250 sheets face down sub tray
Max. output capacity with options: 5,000 sheets A4

Controller

CPU: PowerPC 750GL/750 MHz

Memory: Standard 1,024 MB RAM, max. 2,048 MB RAM, 160 GB HDD as standard

Standard interface

USB 2.0 (Hi-Speed), 2 USB Host Interfaces, Gigabit Ethernet (10/100/1000BaseT), Slot for optional print server, Slot for optional CompactFlash®-card

Controller language: PRESCRIBE IIc

Emulations

PCL6 (PCL5c / PCL-XL), PostScript® 3 (KPDL 3), XPS Direct Print, PDF Direct Print 1.7, with automatic emulation sensing
Optional (UG-34): IBM Proprinter X24E, Diablo 630, Epson LQ-850

Operating systems

All current Windows operating systems, Mac OS X Version 10.4 or higher, UNIX, LINUX as well as other operating systems on request

Fonts/Barcodes

93 scalable fonts for PCL, 136 scalable fonts for PostScript, 8 fonts for Windows Vista, 1 Bitmap font, 45 barcodes (e.g. EAN8, EAN13, EAN128) with automatic generation of checksums as well as support of two-dimensional barcodes PDF-417 under PRESCRIBE (PCL and other barcodes available as an option)

Integrated Accounting: 100 department codes

Consumables

TK-8600K Toner-Kit

Microfine toner black for 30,000 pages A4 in accordance with ISO/IEC 19798

TK-8600C, TK-8600M, TK-8600Y Toner-Kits

Microfine toner cyan, magenta, yellow for 20,000 pages A4 each in accordance with ISO/IEC 19798
Capacity of starter toner is black 15,000 pages, cyan, magenta, yellow 10,000 pages in accordance with ISO/IEC 19798

WT-860 Waste Toner Bottle

22,000 sheets (in accordance with ISO/IEC 19798)

Staple cartridge: SH-10 for DF-770(B), BF-730

SH-12 for DF-790(B)

Options

Paper handling

PF-730 Paper feeder

2 x 500 sheets, 60–256 g/m², A5R–304.8 x 457.2 mm, folio

PF-740 Paper feeder

3,000 sheets, 60–256 g/m², A4, B5, letter

PF-770 A4 side deck

3,000 sheets, 60–300 g/m², A4, B5

PF-780 Multimedia tray and paper path unit

500 sheets, 60–256 g/m², A5R–304.8 x 457.2 mm

DF-790(B) Document finisher + AK-735

Main tray: max. 4,000 sheets A4 (3,000 sheets with attachment

BF-730);

60–300 g/m²; B5R–304.8 x 457.2 mm

Sub tray: 200 sheets A4; 60–300 g/m²; A6R–A3

Stapling up to 65 sheets A4 or 30 sheets A3 at 3 positions,

B5–304.8 x 457.2 mm

DF-770(B) Document finisher + AK-735

Main tray: 1,000 sheets A4, 60–300 g/m², B5E–A3, 3 positions stapling up to 50 sheets A4 or 30 sheets A3
Sub tray: 100 sheets A4, 60–300 g/m², A4–A6R,

PH-7C/PH-7D Punch unit for DF-790(B)/DF-770(B)

2-hole/4-hole/Swedish type, 60–300 g/m², A5R–A3
MT-730(B) Mailbox sorter + AK-736, (when positioned on the printer) Can also be installed directly on the top of the DF-790(B).

7 bins x 100 sheets A4, 50 sheets A3/B4, 60–163 g/m²

BF-730 Booklet and tri-folding unit for DF-790(B)

Half folding: 60–256 g/m², A3, B4, A4R

Booklet: max. 16 sheets (64 pages, 60–90g/m²)

Non-staple folding: max. 5 sheets (60–90g/m²)

Tri-folding: 60–120 g/m², A4R

Multi tri-folding: 5 sheets (60–90g/m²), 3 sheets (91–120g/m²)

'Bridging unit AK-735 is required for the use of DF-790(B) and DF-770(B)', it transfers paper from the printer to the finisher.

Banner Guide (A): Banner paper feeding guide, up to 10 sheets

CB-730 Wooden cabinet

CB-731 Metal cabinet

Memory upgrade: MDDR200-1G: 1024 MB;

CompactFlash® card: CF-4 (4 GB) for printing forms, fonts, logos, macro storage

Data security kit (E) in line with security level EAL3

USB IC Card Reader + Card Authentication Kit (B):

Support for various authentication keys available

IC Card Reader Holder (B):

For integration of a USB IC Card Reader

UG-33: ThinPrint support

UG-34: IBM ProprinterX24, EPSON LQ-850, Diablo 630 emulation

Optional interface

IB-50: Gigabit-Ethernet board 10BaseT/100BaseTX/1000BaseT

Model variations

FS-C8650DN/KL3

FS-C8650DN incl. warranty extension KYOLife 3 years

Warranty

1-year warranty** as standard. KYOCERA guarantees the drums and developers for 3 years or maximum 600,000 pages (whichever occurs sooner), provided the printer is used and cleaned in accordance with the service instructions.

KYO LIFE The up to 5-year on-site warranty extension for printer and options.



Product depicted includes optional extras

Your KYOCERA Business Partner:



Официальный дистрибьютор Кюосера в Украине
тел.: (044) 234-33-46, 234-71-92
e-mail: info@kyocera.kiev.ua, www.kyocera.kiev.ua
01054, г. Киев, ул. О. Гончара 36-А

KYOCERA Document Solutions Europe B.V. – Branch Office Germany – Otto-Hahn-Straße 12 – 40670 Meerbusch – Germany
Tel +49 (0) 2159 928-500 – Fax +49 (0) 2159 918-100
www.kyoceradocumentsolutions.eu – info@deu.kyocera.com

KYOCERA Document Solutions Inc. – 2-28, 1-Chome – Tamatsukuri – Chuo-Ku
Osaka 540-8585 – Japan – www.kyoceradocumentsolutions.com

* KYOCERA Document Solutions does not warrant that any specifications mentioned will be error-free. Specifications are subject to change without notice. Information is correct at time of going to press. All other brand and product names may be registered trademarks or trademarks of their respective holders and are hereby acknowledged.

** Depending on the country

KYOCERA
Document Solutions